

# Proposal Concerning Emigration to Europe

## I. Meeting the Needs of the Lord's Present Move:

"All of the elders and co-workers need to work hard with much prayer to make the Lord's move today clear to all the saints. The present move of the Lord needs all of us to be given to the Lord. Our entire being and all that we have should be fully consecrated to Him. In the Lord's move, there is the need of persons and material supply. If we help the saints realize the Lord's present move, there will be no problem. But if the saints do not receive the adequate education to make them knowledgeable of the Lord's present move, we may suffer some loss. This means we may be short in the financial supply. This is why we need to spend some time in our locality, perhaps one or two months, to fellowship with the saints concerning the Lord's move today and the need in this move for the proper supply of persons and finances. We all have to consecrate ourselves with all that we have to the Lord again.

We must also help the saints concerning how they should give. They should give part of their offering to the church in their locality for the monthly local expenses. They should also give part of their offering for the support of the full-timers. This is based upon nineteen of the saints helping to support one full-timer. We have to endeavor to do this so that the Lord can carry out His desire." (*Elders' Training, Book 9: The Eldership and the God-Ordained Way (1), Chapter 1*)

We encourage the saints throughout the Lord's recovery to complete the purchase of Bower House in London and provide for its expansion, approximately \$2.5 million (US dollars). This would mean that less would be needed from FTTL trainees, many of whom do not yet have supporting churches. This would give the capacity for more than 200 beds and seating for up to 1,000 in the main meeting room.

## II. Brother Lee's burden was to have a special four month training to equip the burdened ones to go to Europe. (WSDLM, Chapter 4)

### III. Purpose of the emigration training:

#### A. To be equipped in the truth:

"After the four-day, four-hour war with Iraq, I received a burden to 'invade' Europe with the divine truths of the Lord's recovery." (*WSDLM, p. 45*)

"We need to be equipped to teach the deeper truths of God's economy to those in Europe." (*p. 50*)

"We will also prepare and equip those who are burdened to go to Europe with an intensive study of the divine truths." (*p. 58*)

#### B. To learn to coordinate and practice the one accord:

"In order to take the Lord's charge, we must keep the oneness. We must have the one accord. If we lose the oneness and the one accord, we are finished as far as the Lord's move is concerned." (*WSDLM, p. 40*)

"Finally, nothing is more crucial, vital, or valuable than the one accord for keeping the oneness. We must always endeavor to keep the oneness by practicing the one accord. We should always practice going along with others, not insisting on our way of doing things. We should not be 'back-seat drivers' in the church life who are full of opinions. This does not mean that we should drop our discernment. When I do things by myself, I will take the top way. But when I go with others, I will take their way. We should learn to do this." (*WSDLM, p. 59*)

#### C. To instill in the trainees the need for one coordinated work in Europe:

"In the Body there are no regions and there are no Jews or Greeks. For such a Body the Lord only has one work on this earth. From the New Testament we can see that the Lord has one move on this earth, one Body, and only one testimony. According to space and time, His New Testament move, His Body, and His testimony are universal. These three aspects must impress us very deeply. The Lord only has one move, one Body, and one testimony." (*Elders' Training, Book 04: Other Crucial Matters Concerning the Practice of the Lord's Recovery, Chapter 3*)

"Another result of coordination is God's move, signified by the great wheel (vv. 16-19). As the living creatures coordinate together, the great wheel appears. This indicates that God's move

follows the coordination of the four living creatures. If there is no coordination, there cannot be the move of the great wheel.” (*Life-Study of Ezekiel, Chapter 8*)

**D. To enter into the practice of the God-ordained way in vital groups:**

“We have to practice all the aspects of the God-ordained way. Then we will be qualified to go to Europe.” (*WSDLM, p. 53*)

“The world situation has been changing, we have also been changing from the old way to the new way, the God-ordained way. We cannot change the truth, but we surely have to change our way to carry out the truth. We all need to change our ‘philosophy’. We need to change the way we preach, the way we meet, the way we help people, and the way we have our home meetings and group meetings to match the God-ordained way. Much of what we are now doing is still according to the old ‘philosophy’. We need to change our philosophy and give up any confidence in our old way.” (*WSDLM, p. 42*)

**E. To test the suitability of the trainees for full-time service:**

“After the saints have applied for this four-month training, there will be a process of being accepted to the training, being educated, being trained, and eventually passing the training.” (*WSDLM, p. 50*)

“In the book of Judges Gideon was raised up to take care of the fighting for God’s people... God gave Gideon a way to test the people to determine whom God would choose and whom God would not choose. The way God used was to observe how the men took care of their necessities. Eating, drinking, and clothing are the basic items of our daily necessities.” (*Fellowship Concerning the Urgent Need of the Vital Groups, Chapter 8*)

**IV. Elements of the training:**

**A. Truth study:**

“When we go to Europe, we should teach the central line of the divine truth with the main stresses without making any small point an issue for debating or fighting that causes divisions.” (*WSDLM, p. 41*)

“After the four-day, four-hour war with Iraq, I received a burden to ‘invade’ Europe with the divine truths of the Lord’s recovery.” (*WSDLM, p. 45*)

“This equipping will mainly be accomplished by an intensified study of the Life-study messages ... We need to be equipped to teach the deeper truths of God’s economy to those in Europe.” (*WSDLM, p. 50*)

**B. Prayer — corporate and individual:**

“We will have much prayer; this is our real need. Nothing in our Christian life can touch our life, open our eyes, and usher us into the reality of what Christ is more than prayer. We need to pray.” (*Fellowship Concerning the Urgent Need of the Vital Groups, Chapter 7*)

**C. Gospel:**

“We should fully abandon the old, traditional, natural way of preaching the gospel. We must have a change to the scriptural, uplifted way of preaching the gospel. ... The special four-month training we will have from August through December will help us to become qualified. We may feel that we cannot make it, but the training will help us to make it.” (*WSDLM, p. 51*)

**D. Prophesying:**

“The trainees also need to be trained in how to speak to people. They need to learn how to present the truths as they have been expounded among us in the Recovery Version and in the Life-study messages. We do not need to invent new messages. We can present the messages which we have already published. We need to present the better things. We have the groceries of the truth among us, so there is no need to try to get new groceries.” (*Elders’ Training, Book 9: The Eldership and the God-Ordained Way (1), Chapter 1*)

**E. Blending and building up:**

“We all need to be built up in the Body. If we become a built-up house, then we will be a serving priesthood, a serving priestly coordination. This is what we need, a coordination by building up.” (*Basic Principles for the Service in the Church Life, Chapter 1*)

**F. Character and life of service:**

“Finally, they have to be built up in their character. They need to be trained to dress properly and to give people a good impression of their appearance.” (*Elders’ Training, Book 9: The Eldership and the God-Ordained Way (1), Chapter 1*)

“We should rise up to follow the Lord in His present move and have ourselves adjusted to His regulations to be useful to Him. ... For us to be useful to the Lord, we need to be particularly sanctified and adjusted in many aspects and in many things that we could be a vessel unto honor at this particular time.” (*WSDLM, p. 44*)

**G. Language:**

“The more languages we can learn, the more useful we can be in the spread of the divine truths.” (*WSDLM, p. 57*)

“We hope to teach the trainees a foreign language by means of a particular book from the ministry which we will compose in English and translate into that language. In this way they will be able to pick up the spiritual vocabulary, and they can go to Europe to speak to the people with the truths from the book they have studied.” (*WSDLM, p. 47*)

**V. The categories of saints who should consider the emigration training:**

**A. Full-time Training graduates:**

“Close to two hundred American saints received training in Taipei, Irving, and Anaheim (*this number is now over 2,600*), but when they returned to their localities, they could not develop their capacity. If some remain in the United States, they will not be very useful, but if they go to Europe, they will become useful.” (*Elders and Co-workers Training, Book 11, Chapter 7, p. 69*)

“If possible, all the college graduates among us, both brothers and sisters, should not take a job immediately after their graduation. They should rather spend one or two years to be trained and then find a job. Whoever will be trained in this way will be a soldier. Some countries practice to train their young people in the military service after their graduation. After their training, the young people can find a job, but when the country has the need, all the trained ones can be recalled and formed into an army.” (*Exercise and Practice of the God-Ordained Way, Chapter 31*)

**B. Campus Workers:**

We encourage at least 1 in 10 of the campus team members to go as soon as possible.

**C. Elders and Co-workers:**

We encourage some co-workers and at least 1 in 20 of the elders to go as soon as possible.

“Some of the co-workers should also be encouraged to go to Europe. We should send not only some ‘soldiers’ but also some co-workers to bear the burden for the Lord’s move.” (*Eldership and the God-ordained Way (3), Book 11, ch. 7, p. 69*)

**D. Saints who would drop their jobs:**

“If the Lord calls us for a need after we have been working for a few years, we should present ourselves to the Lord right away. Of course, this is not an easy thing. Nevertheless, this must be the principle of our having a job. No matter how hard it is, there is nothing too hard for God.” (*The Economy of God and the Mystery of the Transmission of the Divine Trinity, Chapter 10*)

**E. Students:**

“Some can emigrate there [*to Europe*] to study in a school and serve the Lord. I would recommend that some go there to be ‘professional students’. ... I believe that some students who go to Europe can bear new fruit monthly like the tree of life in the New Jerusalem.” (*WSDLM, p. 47*)

**F. Those who would take a job or do business:**

“Some can emigrate there to take a job or do a business and serve the Lord.” (*WSDLM, p. 47*)

“However, all these matters require us to be equipped first. Thus, we need to try our best to equip ourselves whenever possible.” (*The Economy of God and the Mystery of the Transmission of the Divine Trinity, Chapter 10*)

## VI. Support:

### A. Self-supporting:

Brother Lee encouraged saints who had the means to be self supporting to go to Europe in this way.

### B. Support by sending locality:

“The full-timers should live a life by faith, trusting in the Lord for their necessities and receiving the Lord’s supply through the saints and the churches.” (*WSDLM*, p. 54)

“We should endeavor to have one out of twenty saints in our locality serve the Lord with all of their time. In this way nineteen saints can support one full-timer. The saints need to be helped by us to give for the sake of supporting full-timers for the Lord’s move on this earth. We need the full-timers for the spread of the Lord’s recovery. If the Lord had five thousand full-timers in His recovery today, the result would be marvelous. The United States is a strong country because it has a strong military. The full-time trainees should be trained to be such a strong army for the Lord.” (*Elders’ Training, Book 9: The Eldership and the God-Ordained Way (1), Chapter 1*)

## VII. Initial countries of focus:

A. **United Kingdom (including Ireland)** — “We may first strengthen the ministry in England because eventually England will be crucial for all of Europe.” (*WSDLM*, p. 47)

B. **France, Germany** — “Initially, I considered that we should go to Europe in the first step to Great Britain, France, Germany, and Russia.” (*WSDLM*, p. 47)

## VIII. The way to go:

“We are burdened to go to Europe in a team of at least four saints, including a couple between the ages of thirty to fifty, in whose home the meetings will begin. Every team of saints going to Europe should have a couple, and this couple may have some children. This family will be the center of the team. We will try to help them to get a home close to a college or a university. Hopefully, this home will be big enough for keeping two or three guests. It could serve as a place for some emigrating saints to stay until they can become properly situated. The newly-contacted people can be brought to this home for fellowship. This will be our way.” (*WSDLM*, pp. 48-49)

## IX. The need for ongoing fellowship and blending:

Saints would travel to London on a regular basis for fellowship, blending, coordination, and strengthening.

## X. Practical points on how to proceed:

- A. **Location** — Initially, Anaheim, California for four months followed by two months in London, England. “We should realize that Great Britain is very crucial for the Lord’s move throughout Europe.” (*WSDLM*, p. 48)
- B. **Duration** — Four months. Beginning every February and August. “From the middle of August to the middle of December, we will have a special four-month training to equip the burdened ones to go to Europe.” (*WSDLM*, Chapter 4)
- C. Must be able to manage English
- D. Application form and health records to LME with elders’ recommendation
- E. The four-month training is mandatory for perfecting and as a trial period to determine the trainee’s suitability.
- F. **Cost** — \$500 (US Dollars) per month per person during the four months of training for expenses.
- G. All trainees should come with the attitude of participating in a coordinated move in the Lord’s one work in Europe. In the fellowship concerning going out, it may not be possible to meet individual burdens, so there is the need for flexibility.

## XI. Brother Lee clearly expressed what our present direction should be at least 15 years ago; may the Lord’s recovery enter fully into our brother’s burden. “Who among us is willing to be sent by the Lord to another place for the spreading of the divine truths? Instead of having the burden to migrate to spread the Lord’s recovery, many of us have become set, settled, and occupied.” (*WSDLM*, p. 37)

\**WSDLM* = *The World Situation and the Direction of the Lord’s Move*

For information concerning European events visit [www.amanatrust.org.uk](http://www.amanatrust.org.uk).

For applications visit [www.lordsmove.org](http://www.lordsmove.org).

## FELLOWSHIP RELATED TO THE CONSTRUCTION OF A MINISTRY CONFERENCE CENTER

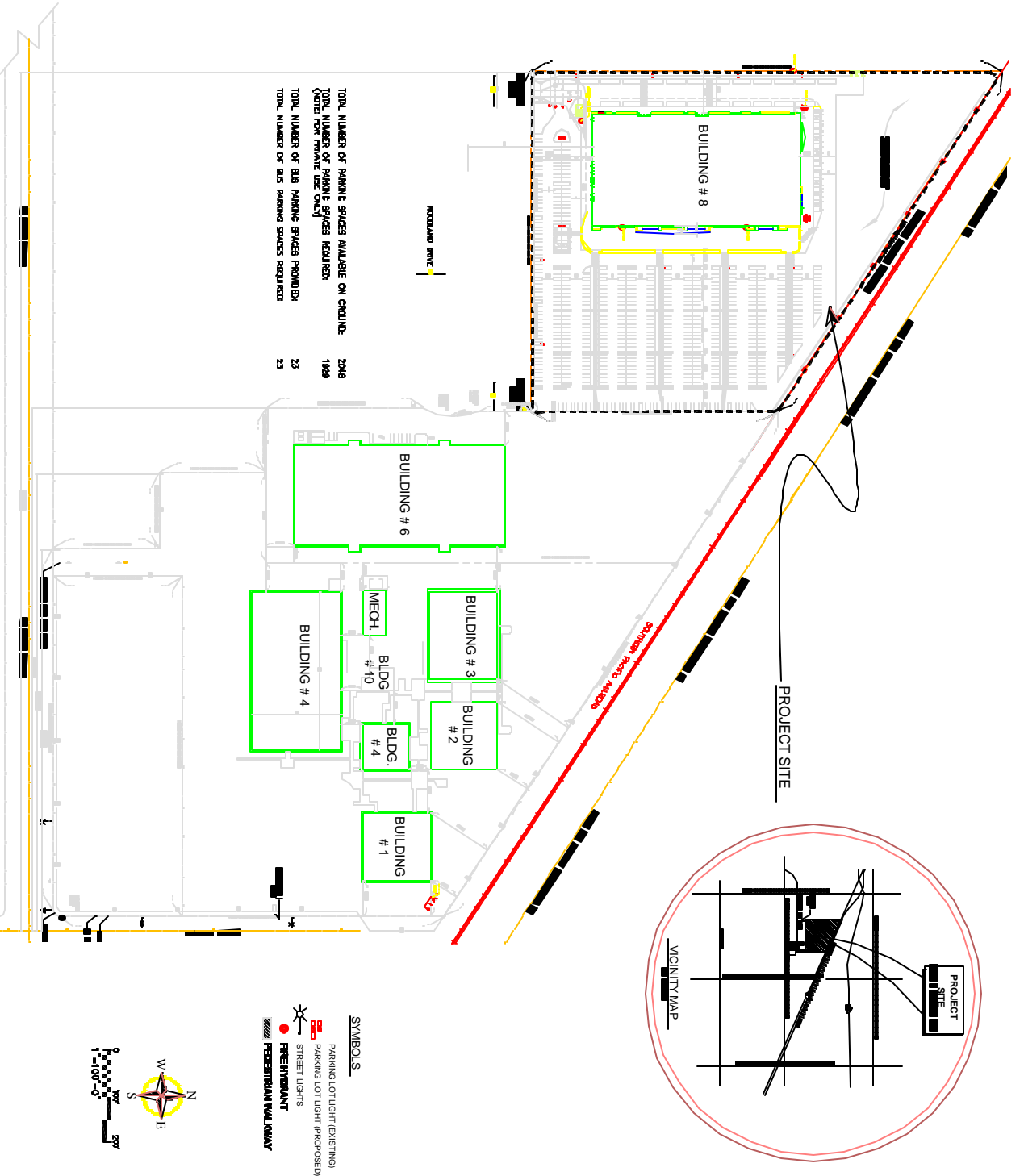
In April 1998 Living Stream Ministry finalized the purchase of the 28-acre campus site which currently serves as the location for the Living Stream Ministry offices, the middle-age full-time training, the weekly ministry station meetings, the summer and winter trainings, and other conferences and trainings. The purchase was made possible by gifts from saints and churches throughout the world. In all, the total purchase price was approximately \$33 million. At the time of purchase, Living Stream Ministry made a commitment to the churches to move toward the development of a permanent ministry conference center, which would replace the facility at Ball Road for this purpose because of its inability to adequately accommodate parking. The Ball Road meeting hall now serves as the site of the Full-Time Training in Anaheim.

Our original plans for a permanent ministry conference center that could accommodate 5000 on the campus site centered on the conversion of Building 5, the building in which the semi-annual trainings are presently held. Parking for 5000 people, or approximately 1650 cars, however, was still problematic. As we were working with the City of Anaheim in the early part of 2000 on various parking solutions, a 13-acre site immediately adjacent to this property, known as the Hubbell property, was put up for sale. Realizing that the Hubbell property could alleviate the City's parking concerns, the Living Stream Ministry, in fellowship with the co-workers, purchased the site in January 2000.

Even though we originally purchased the Hubbell property for the immediate need of parking, the due diligence process revealed that the structural layout and integrity of the main building on the site made remodeling it as the ministry conference center more conducive and cost-effective than remodeling Building 5 and demolishing the main building on the Hubbell property. To this end, in 2002 the City of Anaheim granted us a Conditional Use Permit (CUP) to construct a conference center on the newly purchased site, which could seat up to 5000. This CUP contained some restrictive conditions related to hours of operational use, and after fellowship, it was agreed that LSM should allow this CUP to expire earlier this year in order to seek a more favorable CUP. On November 13, the City of Anaheim approved a new CUP which grants us much greater flexibility in our hours of operation and our prospective uses. These new conditions will enable us to use the facility in a way that is much more responsive to the needs for our trainings and ministry conferences.

Construction will begin shortly on this ministry conference center. In the meantime, Building 5 will continue to be the location of our semi-annual trainings. According to another CUP that now applies to Building 5, we are allowed to meet in Building 5 as we now do until October 2007. There is still the need for much fellowship on how to proceed with the construction of the new ministry conference center. In the past, for example, construction projects have provided many young brothers an opportunity to serve the Lord in a practical way and even to be trained in matters of practical coordination. How the construction proceeds will also depend on the overall development costs. The estimated cost of construction is \$12 million. The facility will serve as a permanent center for the semi-annual trainings and other ministry conferences, and it is our hope that its use can be expanded in coordination with the City of Anaheim for other related uses. At this point, however, we would like to open this matter to the saints and the churches so that we can consider this matter in fellowship.

We hope that all the saints everywhere can be encouraged to pray for us concerning the Lord's leading, covering, and blessing. We hope that, as the Lord leads, all the needs for this project—in finances, in serving ones, and in the labor itself—will be met through much prayer and much participation by all the saints in His recovery on the earth.



PROJECT SITE AND APCC PLAN

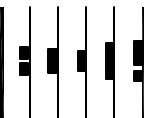
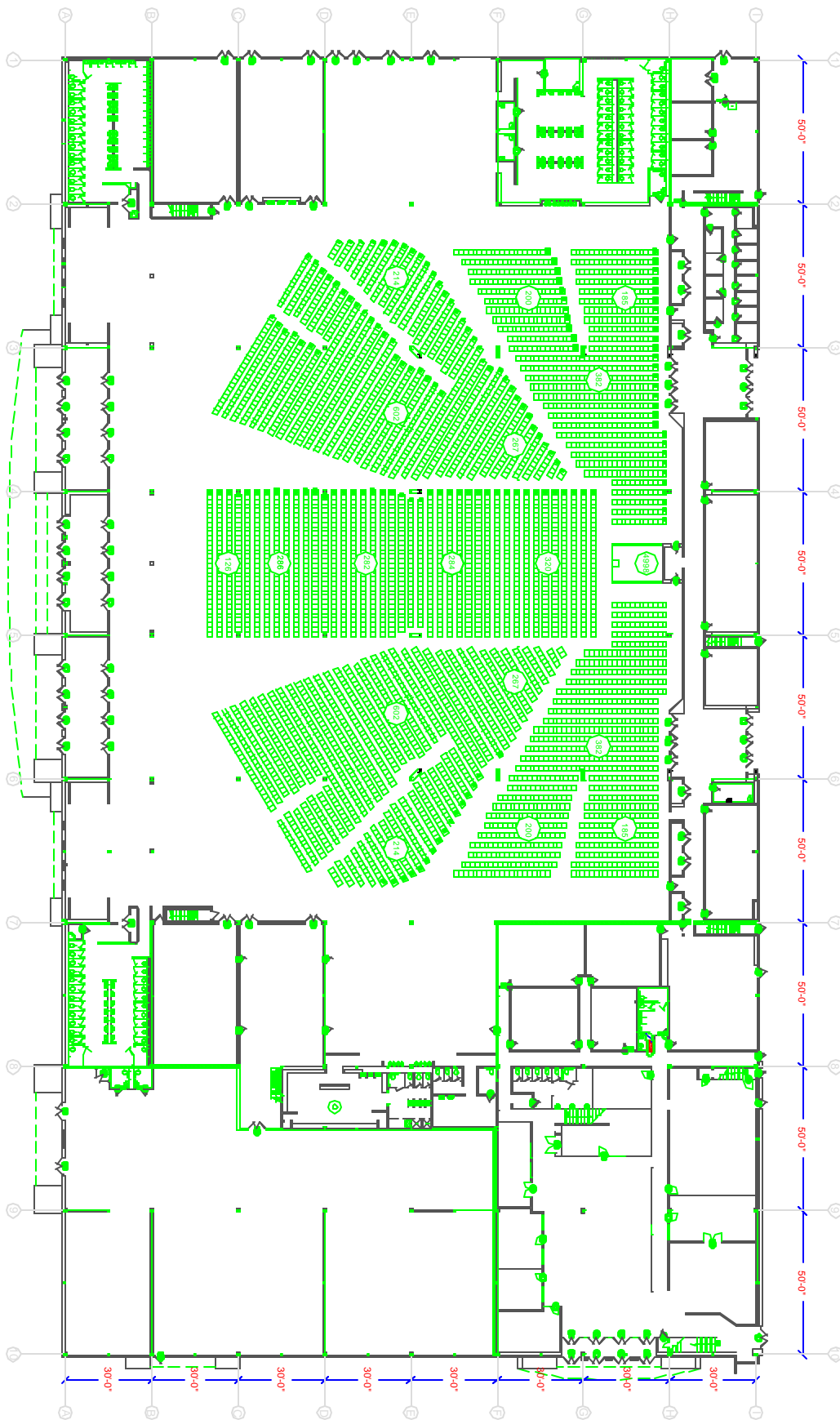
ANAHEIM PALMS  
 TELECONFERENCE CENTER  
 1212 N. HUBBELL WAY ANAHEIM, CA 92801

PROJECT SITE  
 AND  
 APCC PLAN

1A

07/07/2006  
 1:100

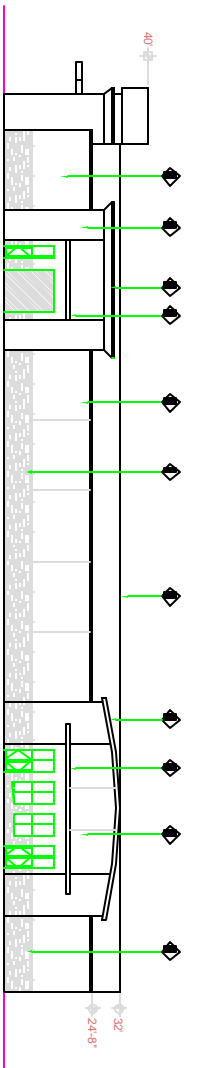
FIRST FLOOR SEATING



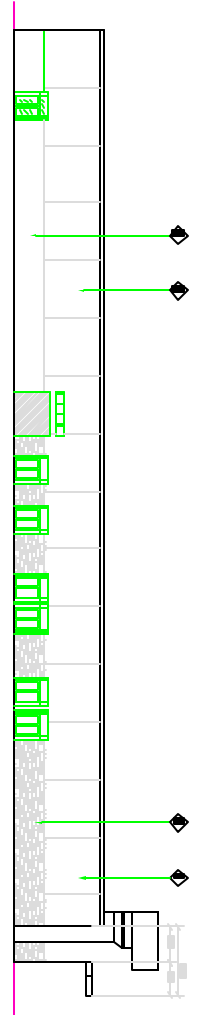
FIRST FLOOR  
SEATING

ANAHEIM PALMS  
TELECONFERENCE CENTER

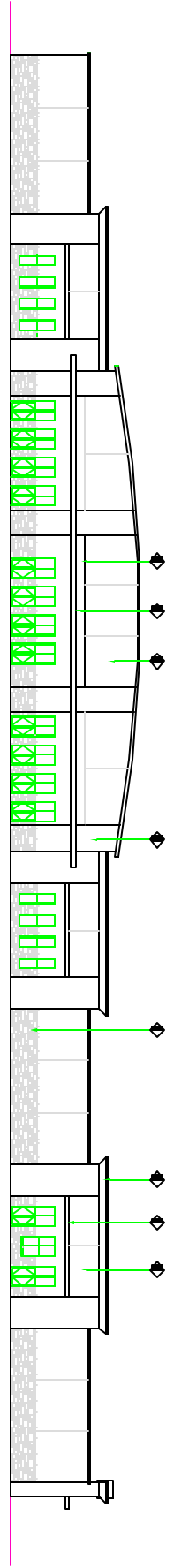
1212 N. HUBBELL WAY ANAHEIM, CA 92801



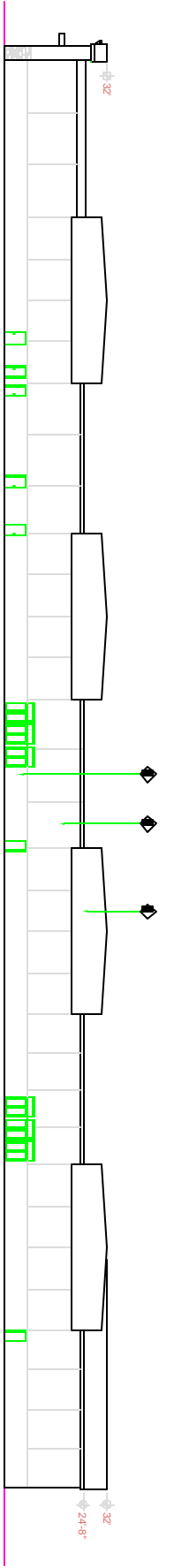
NORTH ELEVATION  
SCALE 1/8" = 1'-0"



SOUTH ELEVATION  
SCALE 1/8" = 1'-0"

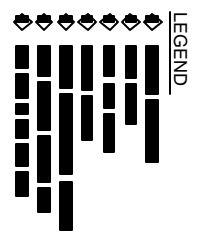


EAST ELEVATION  
SCALE 1/8" = 1'-0"



WEST ELEVATION  
SCALE 1/8" = 1'-0"

ELEVATIONS



LEGEND

**K. G. CHANG**  
ARCHITECTS  
1212 N. HUBBELL WAY  
ANAHEIM, CA 92801  
TEL: 714.771.1111  
WWW.KGCHANG.COM

OWNER:  
ANAHEIM PALMS TELECONFERENCE CENTER  
1212 N. HUBBELL WAY  
ANAHEIM, CA 92801  
TEL: 714.771.1111  
WWW.ANAPALMS.COM

**ANAHEIM PALMS  
TELECONFERENCE CENTER**  
1212 N. HUBBELL WAY  
ANAHEIM, CA 92801

ELEVATIONS

**A5.1**  
09/10/06